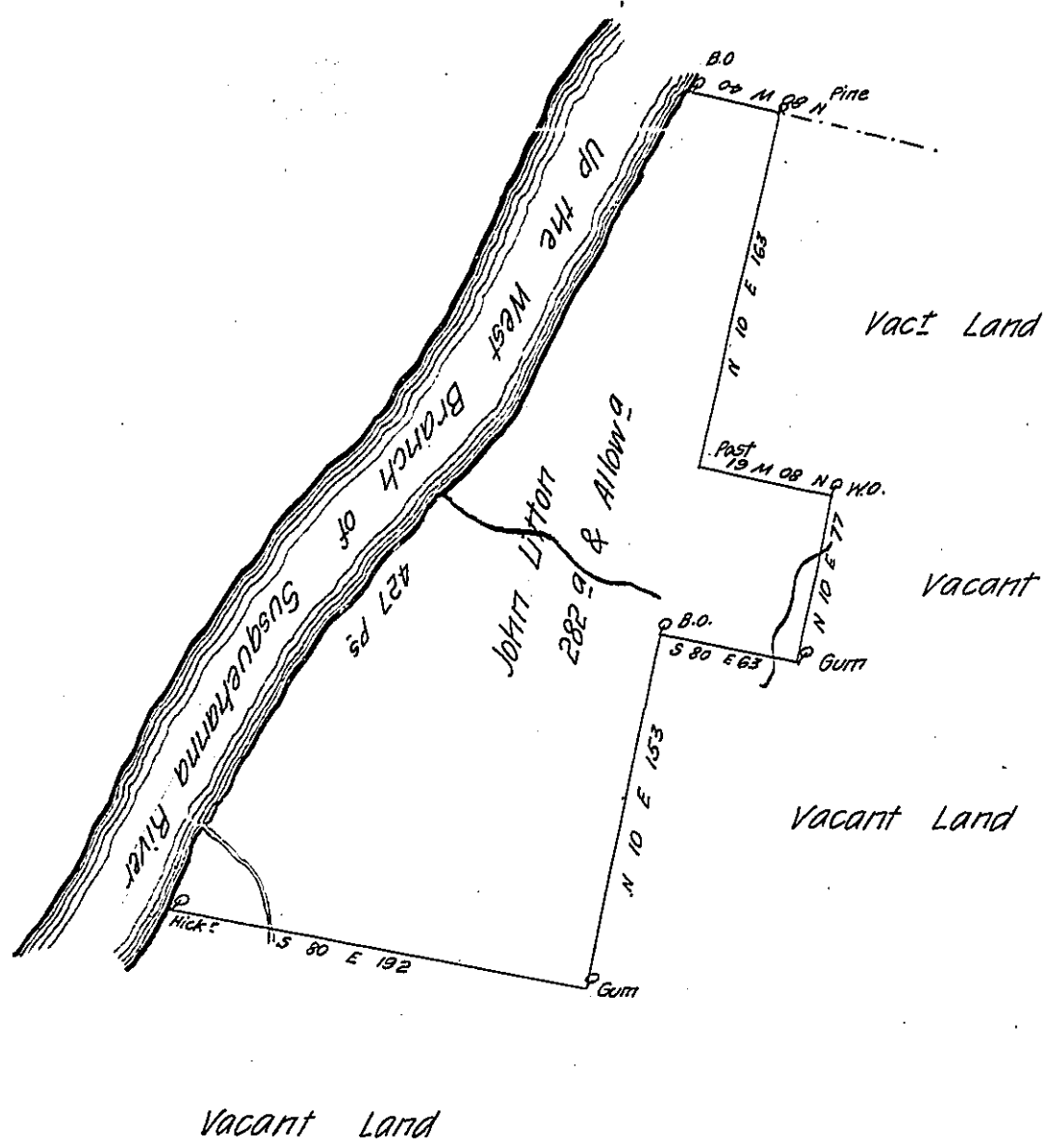


Mary Litton



A Draught of a Tract of Land situate on the South side of the West Branch of Susquehanna-above the Long Reach in the County of Berks Survey'd the 30th day of October 1769 Unto John Litton in pursuance of an application No 962 dated the 3^d of April 1769 Containing Two hundred and eighty two acres & allow^d of six acres P. Ct for Roads &c.

Chas. Lukerts D.S.

To John Lukerts Esq.
Sur. Genl.

IN TESTIMONY that the above is a copy of the original remaining on file in the Department of Internal Affairs of Pennsylvania, made conformably to an Act of Assembly approved the 16th day of February 1833, I have hereunto set my hand and caused the Seal of said Department to be affixed at Harrisburg, this fourth day of March 1907

Isaac D. Brown
Secretary of Internal Affairs.